

# 2.0L | CUP

## 2.0L Cup - Technical Regulations 2022

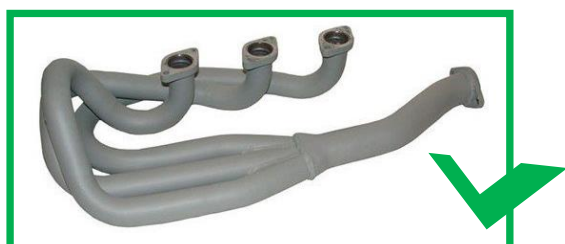
Based on the Homologation Form 183 (apart for exhaust manifolds) and Appendix IX of FIA 2022 Appendix K for Competition Grand Touring Cars.

What is not authorized by the regulations or by the Appendix K is forbidden.

		Notes
Minimum weight	1002 kg	<ul style="list-style-type: none"> <li>- FIA weight, mandatory at any moment of the meeting</li> <li>- Ballast : 70kg maximum, sealed in the car</li> </ul>
Wheels diameter	5 ½J x 15' or 6J x 15'	2 Litre Cup specific regulations
Brakes/Calipers	Original 1965 ATE caliper design and pad size.	<ul style="list-style-type: none"> <li>- Pistons FRONT &gt; φ 48mm and REAR &gt; φ 38 mm</li> <li>- As per FIA Homologation Form 183</li> <li>- Pads dimensions : <ul style="list-style-type: none"> <li>o Front : length 62mm, width 42mm</li> <li>o Rear : length 55mm, width 37mm</li> </ul> </li> </ul>
Front disc brake Diameter	282mm / thickness 12,7 mm.	<ul style="list-style-type: none"> <li>- Solid Disc– non ventilated – non grooved – non drilled</li> <li>- Cooling ducts allowed only if leading to front valance on the existing fog lamp holes.</li> </ul>
Rear disc brake Diameter	285mm / thickness 10 mm.	
Pedal Box	Dual circuit allowed, without modification of the position or attachment of the pedals or structure or car's body, as per Appendix K.	<ul style="list-style-type: none"> <li>- Hydraulic braking systems may be converted to dual circuit operation which provides simultaneous operation on all four wheels via two distinct hydraulic circuits.</li> <li>- Brake Bias adjustment must be removed from the dashboard and cannot be operable from the driver's seat.</li> </ul>
Maximum front track	1379 mm	2 Litre Cup specific regulations
Maximum rear track	1351 mm	
Ride height	100 mm	<ul style="list-style-type: none"> <li>- Mandatory at any moment of the meeting – Tyre pressure +/- 2 bars/30psi</li> <li>- Art. 4.6 – 2.0L Cup regulations</li> <li>- Appendix K – Appendix VIII / Art 10.2</li> </ul>
Anti-roll bars	<ul style="list-style-type: none"> <li>- Diameter : free</li> <li>- One piece only</li> <li>- Not adjustable</li> </ul>	<ul style="list-style-type: none"> <li>- Shape must conform to period</li> </ul>
Maximum capacity / Bore / Stroke	1991 cm3 / 80mm / 66 mm	Aluminium case only – Type 901
Crankshaft	<ul style="list-style-type: none"> <li>- Original, as per period</li> <li>- Minimum weight : 13,3 Kg with bolts</li> <li>- 7 bearings</li> </ul>	<ul style="list-style-type: none"> <li>- Appendix K – Appendix IX / Art 5.8</li> <li>- Weight : +/- 5% of tolerance for weight, as per Appendix K</li> </ul>
Flywheel	<ul style="list-style-type: none"> <li>- Minimum weight : 5,6 Kg with bolts</li> <li>- Diameter : 215mm</li> </ul>	<ul style="list-style-type: none"> <li>- +/- 5% of tolerance for weight, as per Appendix K</li> </ul>
Timing	Original, as per period	<ul style="list-style-type: none"> <li>- Hydraulic chain tensioner forbidden</li> <li>- Aluminium timing gear forbidden, with the exception of the original aluminium layshaft gear</li> </ul>
Valves	<ul style="list-style-type: none"> <li>- φ 39mm intake / φ 35mm exhaust</li> <li>- Stem size 9mm only</li> </ul>	<ul style="list-style-type: none"> <li>- Port size to be standard, as per FIA Homologation Form 183: 32mm each, +/-1mm</li> <li>- Camshaft carrier: 3 bearings cam carriers only</li> <li>- Bearing carrier diameter : 47mm</li> <li>- Camshaft profile free</li> <li>- Rocker arm : aluminium or titanium forbidden</li> <li>- 6 bolts 3 bearing cam carrier covers only</li> </ul>
Rods / pistons	<ul style="list-style-type: none"> <li>- Piston : minimum weight : 390 gr with 3 rings and pin</li> <li>- Rod : minimum weight : 550 gr</li> <li>- Rod center distance : 130 mm</li> <li>- Piston pin diameter : 22mm</li> </ul>	<ul style="list-style-type: none"> <li>- +/- 5% of tolerance for weight, as per Appendix K</li> <li>- Design free</li> <li>- Forged pistons allowed</li> </ul>

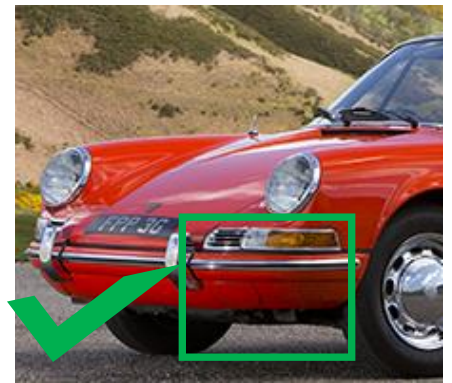
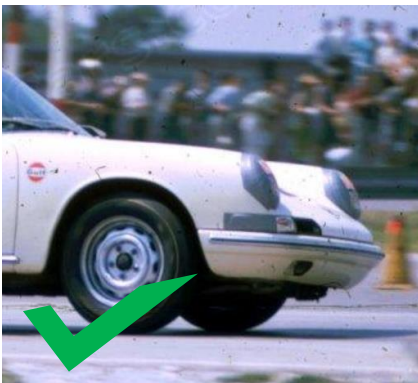
<b>Intake</b>	<ul style="list-style-type: none"> <li>- 2 triple- barrel Solex 40 PI</li> <li>- Ports diameter : <ul style="list-style-type: none"> <li>o 40mm on admission side</li> <li>o 32mm on engine side</li> </ul> </li> </ul>	<ul style="list-style-type: none"> <li>- Venturis and chokes : free diameter,</li> <li>- Weber and PMO forbidden</li> <li>- Ports diameters : +/- 1mm of tolerance</li> </ul>
<b>Ignition</b>	Contact breaker / coil only	<ul style="list-style-type: none"> <li>- Magic Eye, CDI or MSD forbidden</li> <li>- Mechanical spark advance/timing only</li> <li>- All internal engine sensors forbidden</li> </ul>
<b>Oil cooler</b>	<ul style="list-style-type: none"> <li>- 2 maximum authorized,</li> <li>- Oil pump free,</li> <li>- Oil lines diameter free.</li> </ul>	<ul style="list-style-type: none"> <li>- Possible location of oil coolers: Original location on the engine or in the front wings.</li> </ul>
<b>Gearbox / Transmission</b>	<ul style="list-style-type: none"> <li>- 5 speed synchro Porsche</li> <li>- Helical gears only</li> </ul>	<ul style="list-style-type: none"> <li>- Types 901 – 901/0 and 902/1</li> <li>- Final drive : 7/31</li> <li>- Löbro transmission shaft allowed, maximum 6 fixing screws on gearbox side.</li> <li>- Gearbox ratios as per FIA Form 183</li> <li>- Lever and linkage conform to period specs</li> <li>- Shift light allowed – One bulb only – No progressive systems</li> </ul>
<b>Dampers / Drivetrain</b>	Non threaded steel dampers	<ul style="list-style-type: none"> <li>- Aluminium forbidden</li> <li>- Reinforcements on the body forbidden</li> <li>- Adjustable spring plates forbidden</li> </ul>
<b>Exhaust manifold</b>	<ul style="list-style-type: none"> <li>- Silencer free</li> <li>- Dansk manifolds only</li> <li>- Exhaust system internal dimensions: <ul style="list-style-type: none"> <li>o Maximum 35mm on engine side</li> <li>o 46mm on the flange</li> </ul> </li> </ul>	<ul style="list-style-type: none"> <li>- 2 Litre Cup specific regulations.</li> <li>- Noise limit : 105dB(A) max (in dynamic)</li> <li>- Ports diameters : +/- 1mm of tolerance</li> <li>- Dansk manifold without heat exchangers only, parts #1620800470 and 1620800480 are mandatory, with no modification in any way</li> </ul>
<b>Rear axle</b>	Original differential only	System "Torsen" (Helical ATB from Quaife) forbidden
<b>Bodywork</b>	Steel only	<ul style="list-style-type: none"> <li>- Aluminium and polyester forbidden</li> <li>- 3 rear view mirrors mandatory : one central, windscreen-mounted + one on each door</li> <li>- Headlamp glass free</li> <li>- Maximum 2 additional lights, for a total of 4 lights maximum (not including fog lamps)</li> <li>- Cooling ducts out of the front valance forbidden – Must be within the shape of the car</li> <li>- Interior trim (dashboard, door panels) should conform to period specs as much as possible</li> </ul>
<b>Roll cage</b>	6 mounting points mandatory, maximum and minimum authorized.	Cage bolted or welded to the body, as per FIA Appendix K - Appendix VI -Article 1.2.3.3.1.
<b>Windscreen</b>	Only laminated glass	Polycarbonate and tempered glass forbidden
<b>Side glasses</b>	Laminated glass or polycarbonate	Thickness : 4mm minimum
<b>Tyres</b>	185/70 R15	Avon CR6ZZ – A29 compound (HARD) Peter Auto reference 14836M only
<b>Number of engines</b>	Maximum 2 engines per season	Barrel sealed to the block

- **Shape and dimensions of the exhaust manifolds : Dansk 1620800470 and 1620800480 only references allowed**





- **Possible configurations of the front valance**



- **Engine sealing**

